

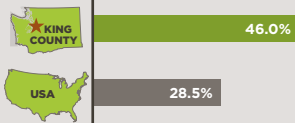
BUILDING EQUITY & OPPORTUNITY

WHAT DOES IT MEAN FOR KING COUNTY? WHAT IS KING COUNTY DOING ABOUT IT?

AT A GLANCE, KING COUNTY IS A GREAT PLACE TO LIVE, LEARN, WORK AND PLAY.

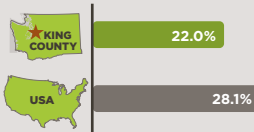
HIGHLY EDUCATED

PEOPLE 25+ YEARS OLD WITH BACHELOR'S DEGREE OR HIGHER EDUCATION



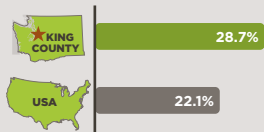
GOOD HEALTH

OBESE ADULTS



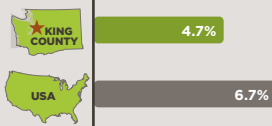
DIVERSE AND GLOBAL COMMUNITY

PEOPLE OF COLOR

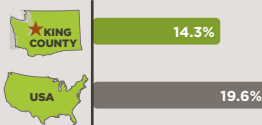


LOWER UNEMPLOYMENT

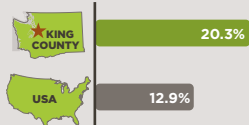
UNEMPLOYMENT RATE (Dec. 2013)



ADULTS CURRENTLY SMOKING

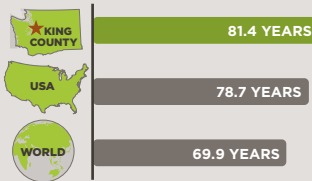


FOREIGN BORN



HIGH LIFE EXPECTANCY

LIFE EXPECTANCY AT BIRTH



PEOPLE (5+ YEARS OLD) WHO SPEAK A LANGUAGE OTHER THAN ENGLISH AT HOME



STRONG HOUSEHOLD INCOME

MEDIAN HOUSEHOLD INCOME



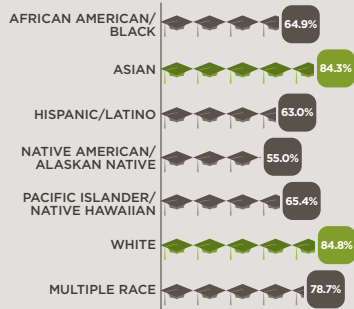
A ROBUST AND INNOVATIVE ECONOMY, STUNNING NATURAL BEAUTY, A THRIVING CULTURAL AND ARTS SCENE, AND AN OPENNESS TO DIVERSITY MAKE KING COUNTY A VIBRANT HOME TO OVER 2 MILLION RESIDENTS.

BUT WHEN YOU LOOK CLOSER, SIGNIFICANT PORTIONS OF OUR COMMUNITY ARE BEING LEFT BEHIND. (1 of 2)

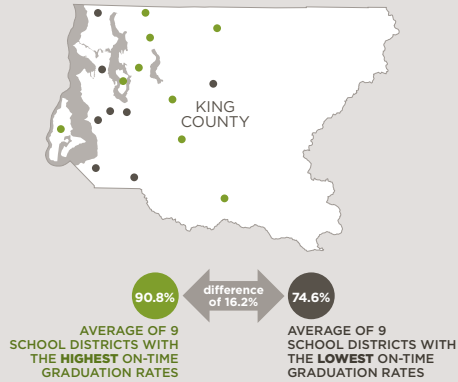
EDUCATION
ON-TIME HIGH SCHOOL GRADUATION RATES

BY RACE

■ ABOVE KING COUNTY (KC) AVERAGE
-- KC AVERAGE: 79.4%
■ BELOW KC AVERAGE



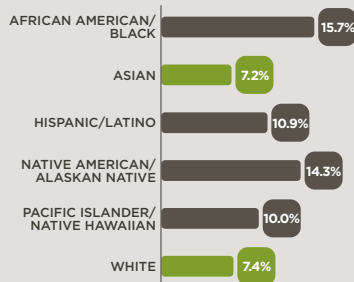
BY PLACE



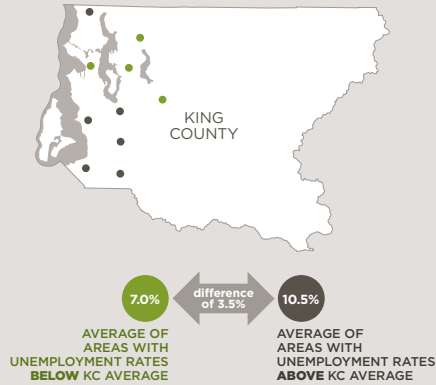
UNEMPLOYMENT
2010-2012

BY RACE

■ LOWER UNEMPLOYMENT RATES
-- KC AVERAGE: 8.2%
■ HIGHER UNEMPLOYMENT RATES



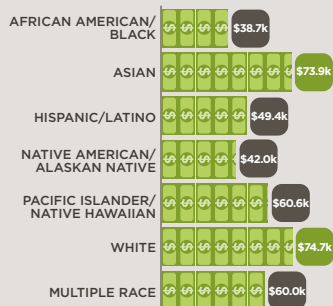
BY PLACE



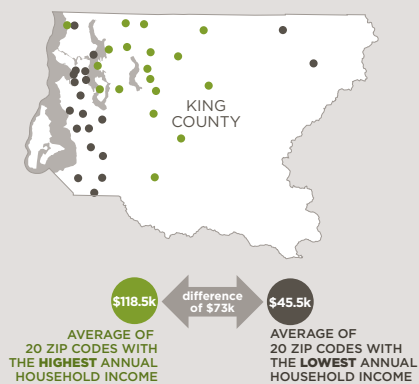
INCOME
ANNUAL HOUSEHOLD INCOME

BY RACE

■ ABOVE KC AVERAGE
-- KC AVERAGE: \$71,175
■ BELOW KC AVERAGE



BY PLACE



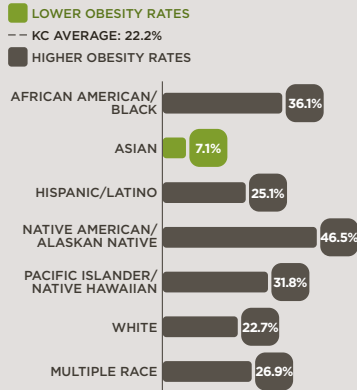
THESE DIFFERENCES ARE PREVENTING MANY OF OUR RESIDENTS FROM REACHING THEIR FULL POTENTIAL.

BUT WHEN YOU LOOK CLOSER, SIGNIFICANT PORTIONS OF OUR COMMUNITY ARE BEING LEFT BEHIND. (2 of 2)

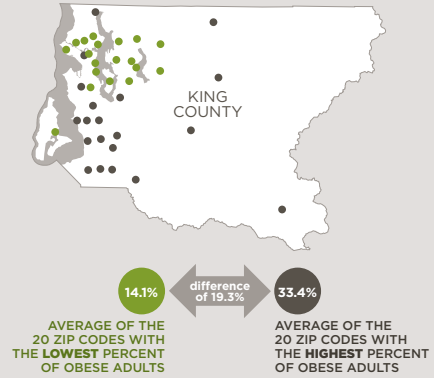


HEALTH
ADULT OBESITY (2008-2012)

BY RACE

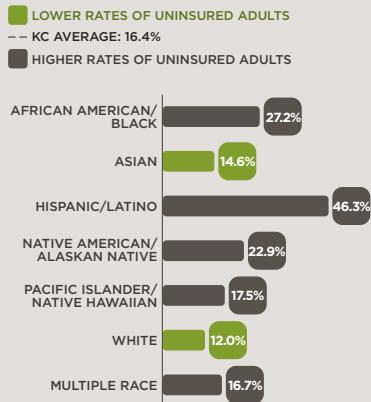


BY PLACE

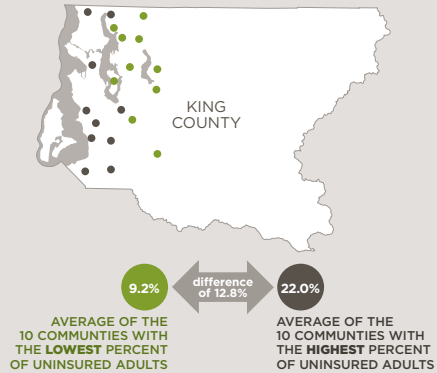


HEALTH
ADULTS WITHOUT HEALTH INSURANCE BEFORE AFFORDABLE CARE ACT ENROLLMENT (2011)

BY RACE

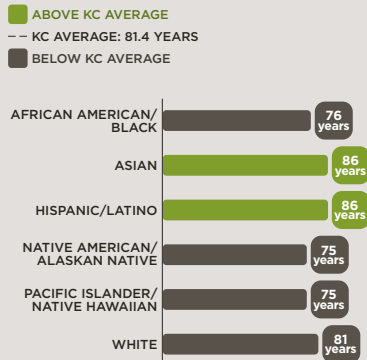


BY PLACE

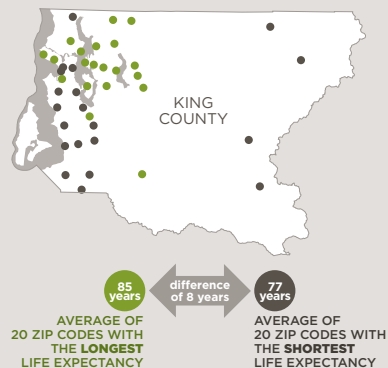


LIFE EXPECTANCY

BY RACE



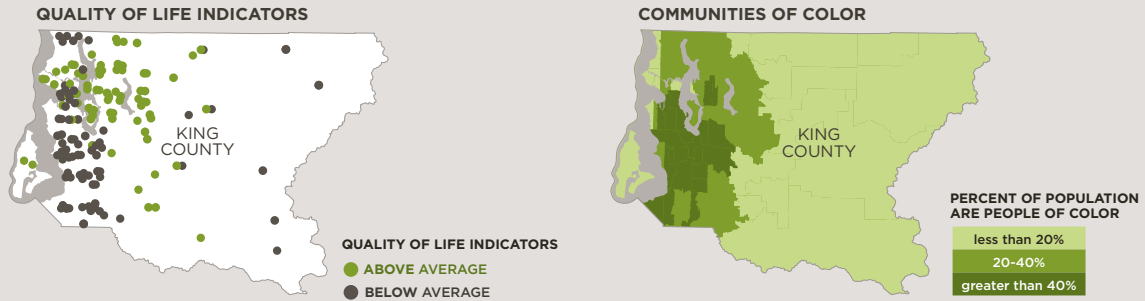
BY PLACE



THESE DIFFERENCES ARE PREVENTING MANY OF OUR RESIDENTS FROM REACHING THEIR FULL POTENTIAL.

RACE AND PLACE MATTER IN KING COUNTY.

RACE AND PLACE PREDICT WHETHER PEOPLE HAVE THE OPPORTUNITY TO THRIVE.



PEOPLE OF COLOR GENERALLY DO NOT EXPERIENCE THE SAME QUALITY OF LIFE AS WHITE RESIDENTS.

For detailed data source information go to: kingcounty.gov/exec/buildingequity/sources

WHAT DO ALL RESIDENTS NEED TO REACH THEIR FULL POTENTIAL?

King County **14 DETERMINANTS OF EQUITY**
 THE CONDITIONS KING COUNTY HAS IDENTIFIED THAT EACH OF US NEED TO THRIVE

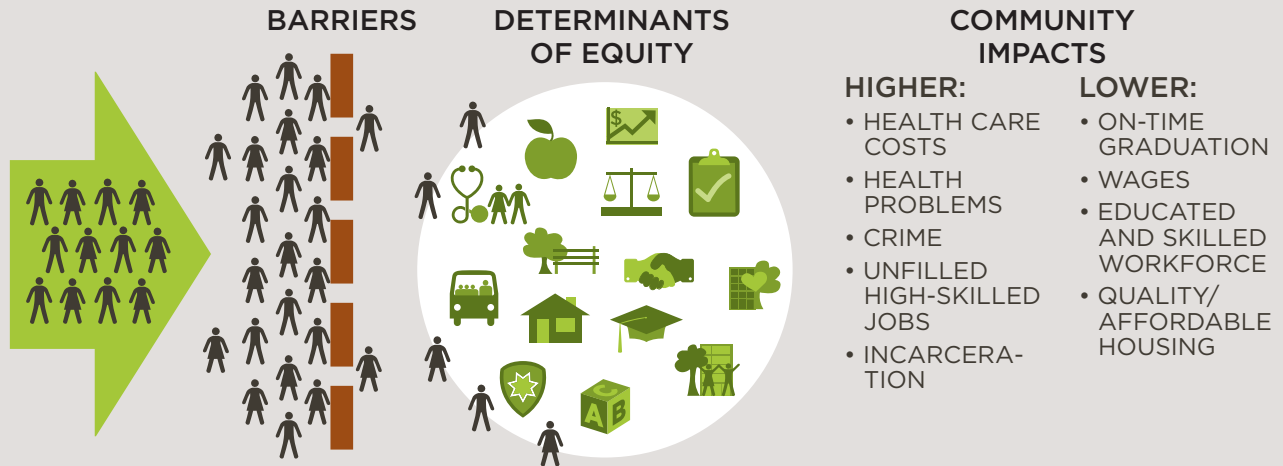
- ACCESS TO AFFORDABLE, HEALTHY, LOCAL FOOD
- COMMUNITY AND PUBLIC SAFETY
- FAMILY WAGE JOBS AND JOB TRAINING
- ACCESS TO HEALTH AND HUMAN SERVICES
- EARLY CHILDHOOD DEVELOPMENT
- HEALTHY BUILT AND NATURAL ENVIRONMENTS
- ACCESS TO PARKS AND NATURAL RESOURCES
- ECONOMIC DEVELOPMENT
- QUALITY EDUCATION
- ACCESS TO SAFE AND EFFICIENT TRANSPORTATION
- EQUITABLE LAW AND JUSTICE SYSTEM
- STRONG, VIBRANT NEIGHBORHOODS
- AFFORDABLE, SAFE, QUALITY HOUSING
- EQUITY IN COUNTY PRACTICES



FLOURISHING COMMUNITIES ARE ROOTED IN THE DETERMINANTS OF EQUITY.

INEQUITIES HURT EVERYONE.

WHEN PEOPLE LACK ACCESS TO THE DETERMINANTS OF EQUITY, THEY LACK OPPORTUNITY. THE RESULTING INEQUITIES IMPACT THE WHOLE COMMUNITY.



KING COUNTY IS FOCUSING ON REMOVING BARRIERS AND INCREASING ACCESS, SO ALL PEOPLE HAVE THE OPPORTUNITY TO THRIVE.



WE ARE ALL BETTER OFF WHEN ALL OF US ARE BETTER OFF.

WHAT IS KING COUNTY DOING TO BUILD EQUITY AND OPPORTUNITY?

DEVELOPING STRATEGIES THAT ADDRESS ROOT CAUSES OF INEQUITIES AND ENGAGE COMMUNITIES:

EQUITY AND SOCIAL JUSTICE

Starting this year, all agencies in King County are working internally and with partners in business, philanthropy, public and community/civic sectors as part of an Equity and Social Justice strategic planning process to create a blueprint for regional change.



ACCESS TO HEALTH SERVICES

More than 200,000 residents in King County gained access to affordable health coverage thanks to enrollment activities by community organizations, business, schools, labor and others.

UP NEXT

Ensuring people remain covered and have access to quality health care and preventive services.



STRONG, VIBRANT NEIGHBORHOODS

King County and The Seattle Foundation announced community investments to build on local strengths and reverse increasing health, social, racial and economic inequities.

UP NEXT

Lead organizations in SeaTac and Tukwila, the Rainier Valley in Seattle, and the White Center/North Highline unincorporated area are embarking on collaborative work driven by each community's agenda and priorities.



BEST STARTS FOR KIDS

EARLY CHILDHOOD DEVELOPMENT

The Youth Action Plan, led by a task force, recommended priorities for serving children, youth and young adults to ensure that they thrive.

UP NEXT

Best Starts for Kids will invest in what works: strengthen a child's early development, invest at key developmental milestones on children's journey to adulthood, and create healthy communities that support their progress.



ACCESS TO SAFE AND EFFICIENT TRANSPORTATION

Through a broad partnership, King County has implemented the ORCA LIFT Reduced Fare Program, providing low-income populations more equitable access to public transportation and other services.

UP NEXT

Anybody earning at or below 200 percent of the federal poverty line may be eligible for the ORCA LIFT card and other public assistance programs. Visit ORCALIFT.com.



EQUITABLE LAW AND JUSTICE SYSTEM

Despite nearly a 75% reduction in the number of youth in secure detention in King County, youth of color - especially African American youth - remain a substantially greater proportion of incarcerated youth.

UP NEXT

King County is taking short-term steps to reduce the number of youth in detention, while working with the broader community and constituents on a longer-term racial equity plan that fundamentally shifts the county's philosophy of juvenile justice and focuses on opportunity for youth.



LOCAL FOOD INITIATIVE

The Executive convened a "Kitchen Cabinet" including farmers, restaurateurs, grocers, distributors, and food innovators to develop targets and actions for governments, businesses and non-profits to achieve a resilient, thriving local food system that is readily available to all communities.

UP NEXT

King County will expand the "Fresh Bucks" program to farmers' markets in South King County, and will fund pilot projects this fall to build consumer awareness and demand for local, healthy foods.

KING COUNTY CAN'T BUILD EQUITY ALONE. LEARN MORE AT KINGCOUNTY.GOV/EQUITY.